



MANITOBANS' VIEWS ON COVID-19 AND LONG-TERM CARE

NOVEMBER 2020

PROBE RESEARCH INC.

FOR MORE INFORMATION:

Scott MacKay

President

PROBE RESEARCH INC.

603 – 191 Lombard Ave.

Winnipeg, MB R3B 0X1

(204) 926-6565

scott@probe-research.com

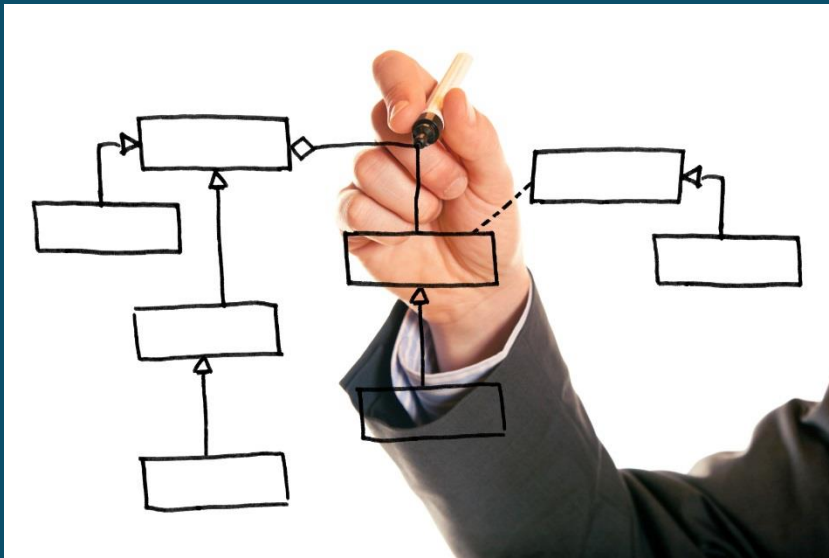
www.probe-research.com



KEY FINDINGS

- During the COVID-19 pandemic, many long-term care facilities – including several here in Manitoba – have experienced significant outbreaks of the virus causing many deaths. Some of the worst outbreaks have been at privately-owned and operated long-term care facilities, which has led to calls for the provincial government to take over these facilities.
- Manitobans are more likely to want the province to take over the operations of these facilities, with nearly one-half expressing this view compared to just one-in-five who say these facilities should remain privately operated (fully one-third are unsure). Women and older Manitobans as well as those living in Winnipeg are more likely to want the provincial government to step in and begin operating these facilities.
- Confidence in the level of care at long-term care facilities has decreased sharply in the past four months. Today, only slightly more than one-third are very or somewhat confident a loved one would receive an adequate level of attention compared to nearly one-half who expressed the same level of confidence in August.
 - Those who do not have a loved one currently in care are twice as likely as those who do have someone in this type of facility to express confidence about the level of care available.
- A growing proportion of Manitobans say improving long-term care facilities should be the highest priority for governments across Canada. Nearly one-half of Manitobans share this view, with fully six-in-ten people over the age of 55 saying this should be the top priority for the federal and provincial governments.

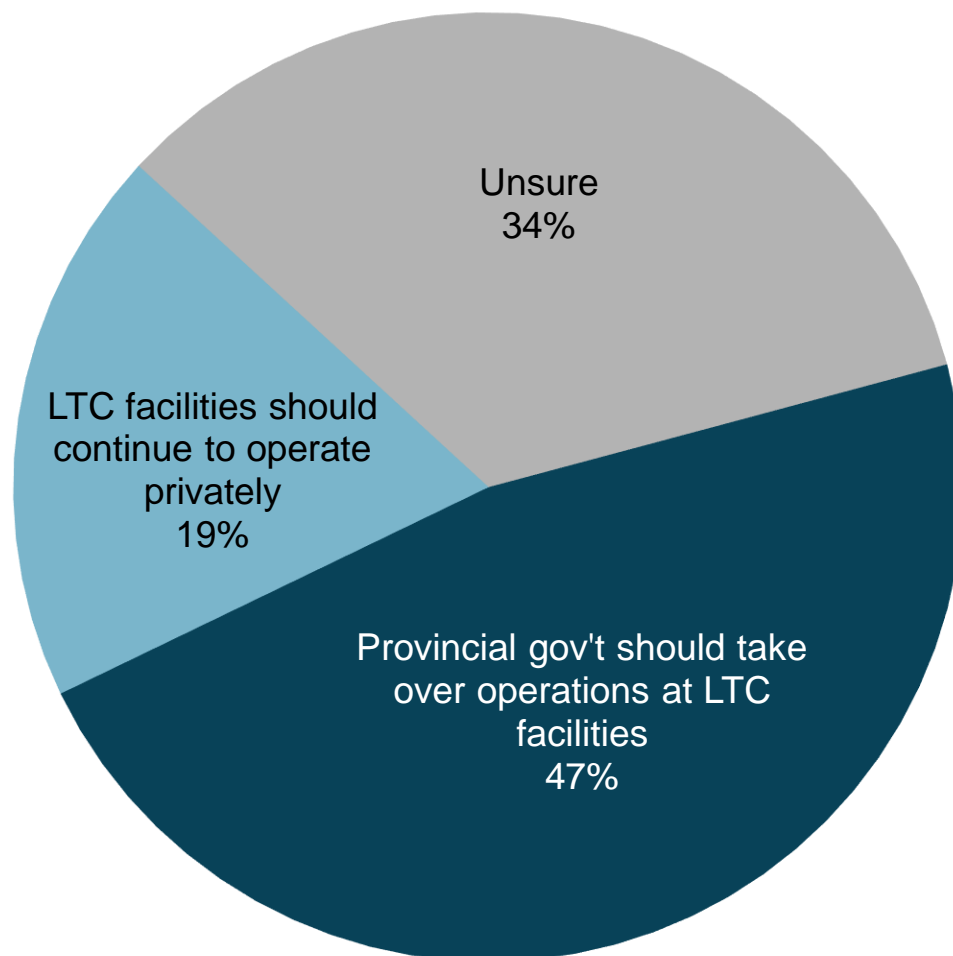
METHODOLOGY



- Between October 31st and November 3rd, 2020, Probe Research surveyed a representative sampling of 800 adults residing in Manitoba. This included members of Probe Research's online proprietary panel, as well as a national panel.
- Because an online survey is a sample of convenience, no margin of error can be ascribed. For the purposes of comparison, a non-probabilistic sample of N=800 would have a margin of error of ± 3.5 percentage points, 19 times out of 20.
- Minor statistical weighting has been applied to this sample to ensure that age and gender characteristics properly reflect known attributes of the province's population. All data analysis was performed using SPSS statistical analysis software.
- The questionnaire was designed by Probe Research.
- Tracking questions included in this report are taken from a survey of N=1,049 Manitoba adults conducted August 19th to 29th, 2020. This sample also included members of Probe Research's proprietary panel as well as respondents from a supplemental panel provider.

NEARLY ONE-HALF SAY PRIVATE LONG-TERM CARE FACILITIES SHOULD BE TAKEN OVER BY THE PROVINCE

Q5. "As of October 30, 2020, there have been 22 residents of the Parkview Place long-term care home in Winnipeg who died as a result of COVID-19. Parkview Place is one of a number of privately owned and operated long-term care facilities in the province. There has been some discussion about whether or not the provincial government should now take over Parkview Place and possibly other privately owned and operated long-term care facilities when there are major outbreaks and deaths. What do you think? Should privately owned and operated long-term care facilities in Manitoba continue to be operated by their current owners, or should the provincial government take over the operation of these facilities?"



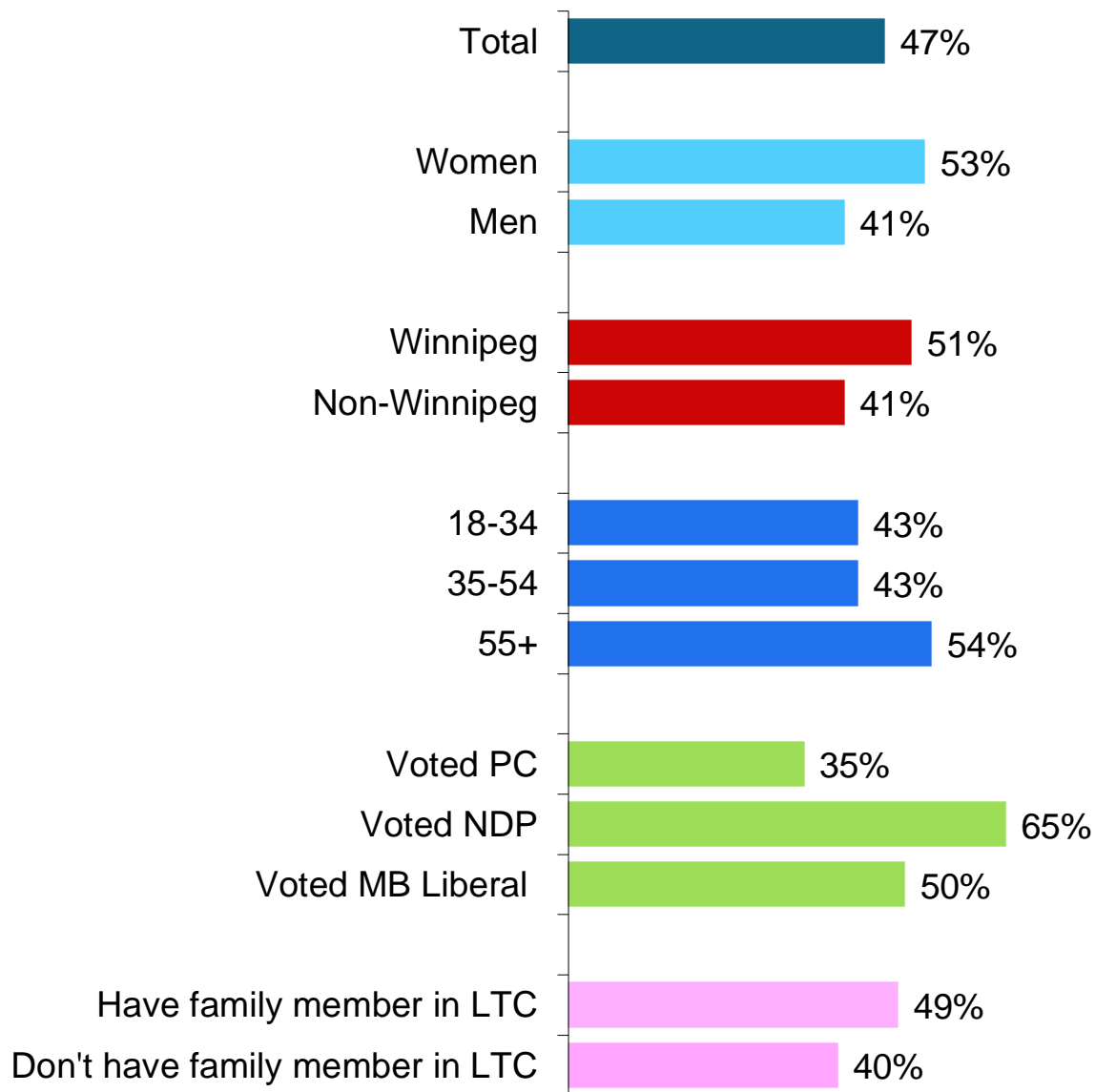
Base: All respondents (N=800)

WOMEN, WINNIPEGGERS, OLDER MANITOBANS SAY GOV'T SHOULD TAKE OVER LONG- TERM CARE FACILITIES

Q5. "...Should privately owned and operated long-term care facilities in Manitoba continue to be operated by their current owners, or should the provincial government take over the operation of these facilities?"

Base: All respondents (N=800)

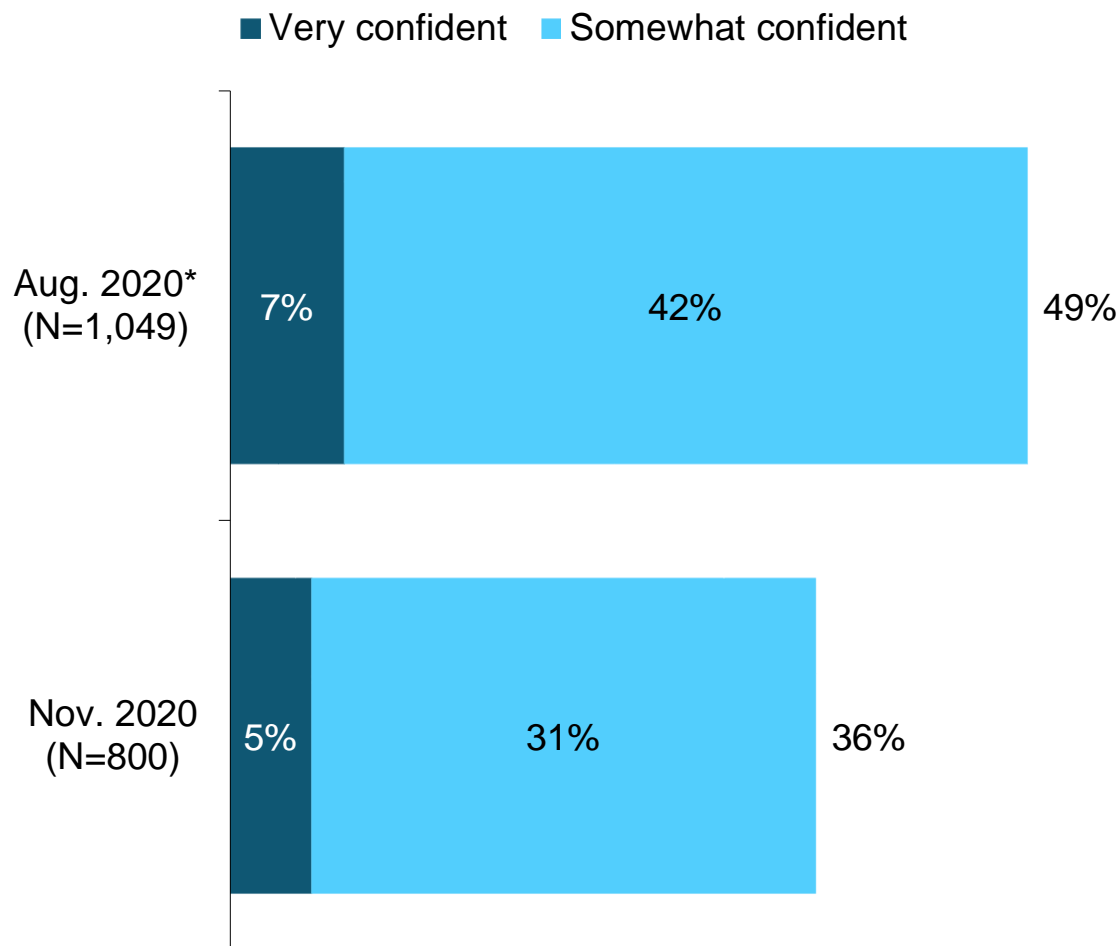
% who say the provincial government should take over operations of private LTC facilities



ONLY ONE-THIRD NOW CONFIDENT A LOVED ONE WOULD RECEIVE ADEQUATE ATTENTION IN LONG-TERM CARE

Q4. "If you were considering placing a loved one into a long-term care facility in Canada, how confident are you that this person would receive an adequate level of care and attention? Would you be...?"

Base: All respondents
*DK/NA results removed



Those most likely to be **confident about the level of care** include:

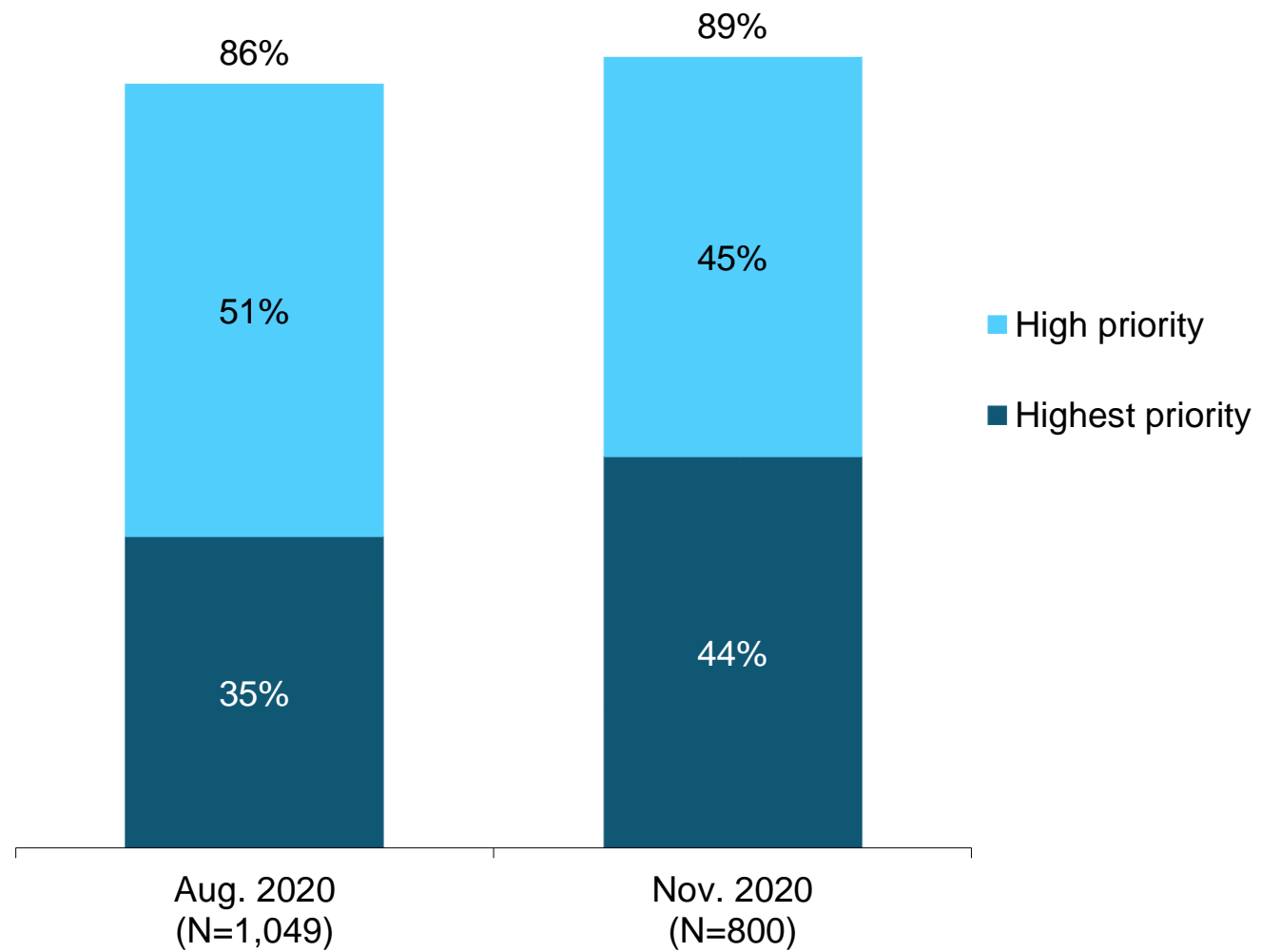
- Those living in rural and northern Manitoba (45% vs. 30% among Winnipeggers).
- Men (40% vs. 32% among women).
- Those who voted for the PCs in the last provincial election (45% vs. 29% among NDP supporters).
- Those who do not have a family member in long-term care (63% vs. 30% among those who do have someone in care).

GROWING NUMBERS INSIST FIXING LONG-TERM CARE CONDITIONS IS A MAJOR PRIORITY

Q3. "Many of those who have died so far in Canada during the COVID-19 pandemic were residents of long-term care homes. The high death rate in these facilities has prompted some to call for the federal and provincial governments to conduct an investigation into the conditions in these long-term care facilities and make improvements.

How high of a priority, if at all, is it for governments to ensure conditions are improved in these long-term care facilities? Is it...?"

Base: All respondents (N=800)



WOMEN, OLDER MANITOBBANS MOST LIKELY TO SAY FIXING LONG-TERM CARE IS PRIORITY # 1

Q3. "...How high of a priority, if at all, is it for governments to ensure conditions are improved in these long-term care facilities? Is it...?"

% who say improving long-term care is the highest priority

